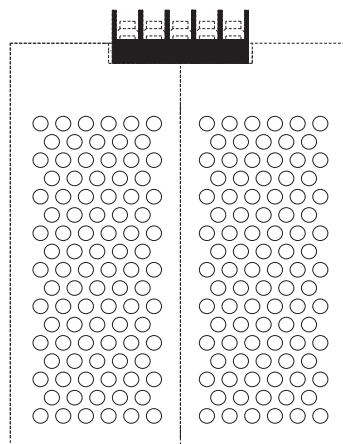
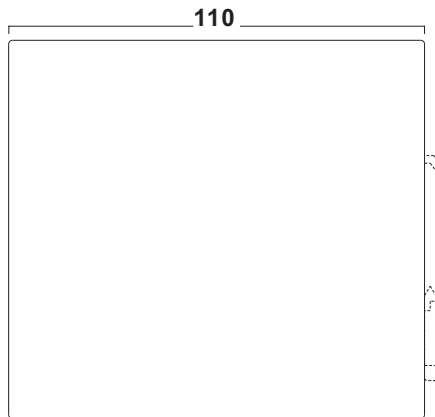
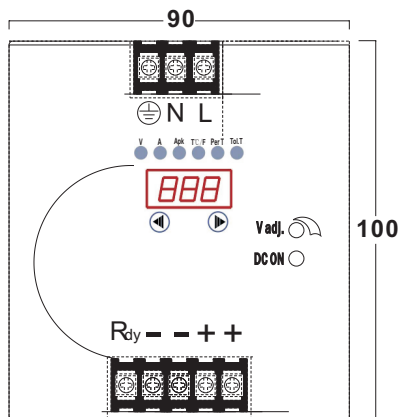
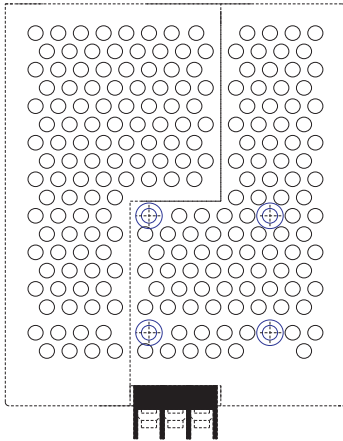




Mechanical Details



Panel Designation

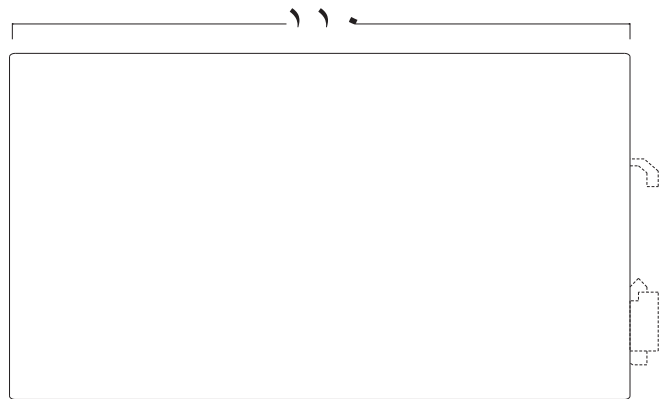
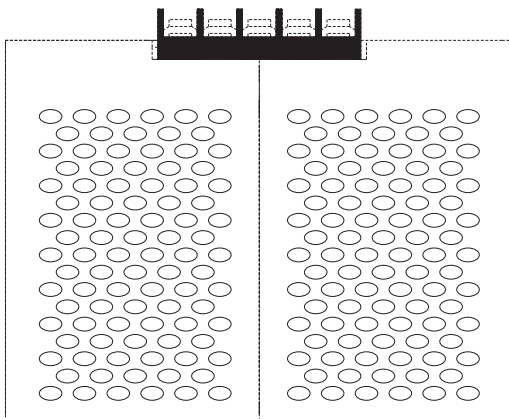
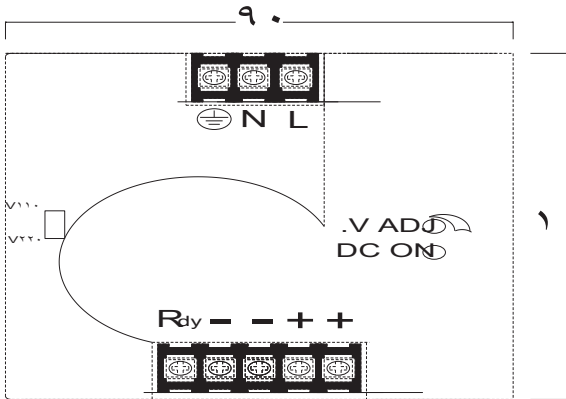
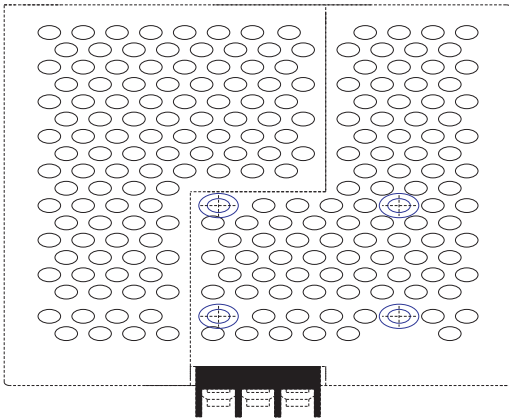
Designation	Description
N	Neutral Terminal Of AC Input (No Polarity At DC Input)
L	Line Terminal Of AC Input (No Polarity At DC Input)
⊕	Grounding (Earth)
COM	DC Output OK Signal 10A Contact Relay 1A Current Rating
C1	Normal Close Connection
C2	Normal Open Connection
-	DC Negative Output Terminal
+	DC Positive Output Terminal
V adj.	Potentiometer For Output Voltage
DC ON	Green LED Indicator

CASE NO. : CS120DR
 UNIT : mm
 DIMENSIONS : 100(H)*110(D)*90(D)

Reign Power reserve the right to change specifications at any time without notice.



Mechanical Details



Panel Designation

PANEL DESIGNATION

Designation	Description
N	Neutral Terminal Of AC Input (No Polarity At DC Input)
L	Line Terminal Of AC Input (No Polarity At DC Input)
⊕	Grounding (Earth)
Rdy	DC Output OK Signal (10A Contact Relay)
+	DC Positive Output Terminal
-	DC Negative Output Terminal
V ADJ.	Potentiometer For Output Voltage
DC ON	Green LED Indicator

mm: UNIT
CASE NO.: CS1120D
MATERIAL: ALUMINUM
DIMENSIONS:
100 (H)x110 (D)x 90 (W)
COLOR: ALUMINUM

Reign Power reserve the right to change specifications at any time without notice.